

REV	DATE	MODIFICATION	DRAWN
	27/01/05		E

SPECIFICATIONS  
1. ELECTRICAL:

UL APPLICATIONS: 250 VOLTS AC MAX., AT 2 AMPS.  
DIELECTRIC WITHSTANDING VOLTAGE: 500 VOLTS AC.  
INSULATION RESISTANCE: 100 M $\Omega$ .  
TERMINATION: RESISTANCE 20m $\Omega$  MAX AFTER ENVIRONMENTAL TESTING.

2. MECHANICAL:

CABLE-TO-PLUG TENSILE STRENGTH: 19.6N/PCS MIN.  
DURABILITY: 200 MATING CYCLES.  
3. MATERIAL & FINISH:  
HOUSING: POLYCARBONATE: UL94V-0 OR UL94V-2.  
COLOR: TRANSPARENT OR OTHER COLOR ARE AVAILABLE.  
CONTACT BLADE: PHOSPHOR BRONZE.  
CONDUCTOR: STRANDED & SOLID WIRE. 24AWG, 26 AWG.  
GOLD PLATING: 3u"~.50u" ARE AVAILABLE.

规范  
1. 电器:

UL应用最大250V OLTS AC.  
介质耐电压伏特数: 500V OLTS AC.  
绝缘阻抗: 100百万欧姆.  
终端阻抗: 在环境测试后最大可承受20微欧姆终端阻抗.

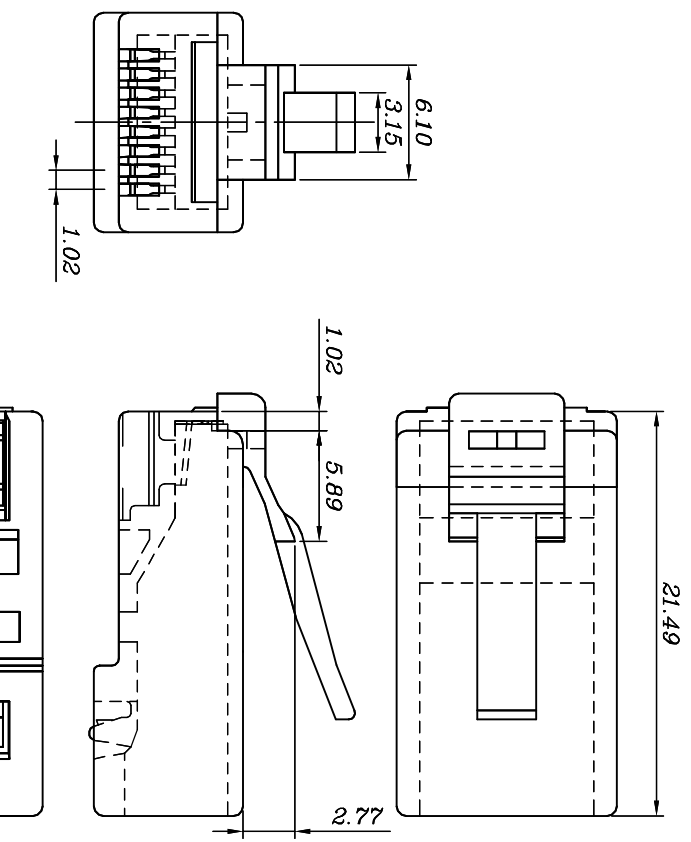
2. 机构

拉力测试: 至少19.6N/PCS.  
耐力测试: 至少200次之插拔测试.

3. 材质表面处理

塑胶壳: 聚碳酸酯, UL-94V-0 or UL94V-2.  
颜色: 透明, 或者其他颜色亦可.  
金片: 磷铜片.  
导体: 多股线 & 单股线. 24AWG, 26AWG.  
镀金厚度: 3u"~.50u", 皆可提供.

客户用产品图



ITEM: \_\_\_\_\_

BLADE:	E	Y	Z	A	YL	ZL
Drawing						
Mark			✓			
GOLD PLATING	3u"	6u"	15u"	30u"	50u"	
Mark				✓	CABLE TYPE Mark	ROUND ✓
						FLAT ✓

**EXW** 宁波卓新通讯插件有限公司  
NINGBO EXCELLENCE COMMUNICATED CONNECTOR CO.,LTD

DIMENSION IN mm (Inch)	材 质	图 号
TOLERANCE UNLESS OTHERWISE SPECIFIED	MATERIAL	DWG NO.
.X $\pm$ 0.20	PC	PLUG-026
.XX $\pm$ 0.10	名称	TITLE
.XX $\pm$ 2 $^\circ$	CAT6(0.35)L UTP	
审核	核对	制图
APPROVAL	CHECKED	DRAWN
		Lucia
		比例
		SCALES
		5/2
		张数
		SHEET
		1/1
		更改
		REV
		E

1 2 3 4 5 6 7

A B C D

ST-DR-009A